

# ReOpen: A Forum for and with Executive Leaders in the Housing Industry

May 21, 2020



1

BEFORE WE START...

## Technical Difficulty?

Email [professionaldevelopment@nahro.org](mailto:professionaldevelopment@nahro.org) or Call 202-289-3500

## Questions

Enter your questions into the chat/questions box.

Raise your hand during the discussion and your line will be unmuted.

2



**Sunny Shaw**  
NAHRO President  
&  
Chief Executive Officer of  
Housing Alliance and  
Community Partnerships



© 2020 NATIONAL ASSOCIATION OF HOUSING & REDEVELOPMENT OFFICIALS

3

3



**Adrienne Todman**  
Chief Executive Officer



© 2020 NATIONAL ASSOCIATION OF HOUSING & REDEVELOPMENT OFFICIALS

4

4



Sunny Shaw  
NAHRO President  
&  
Chief Executive Officer of  
Housing Alliance and  
Community Partnerships



© 2020 NATIONAL ASSOCIATION OF HOUSING & REDEVELOPMENT OFFICIALS

5

5



Marsha Parham-Green  
Executive Director  
Baltimore County  
Office of Housing



© 2020 NATIONAL ASSOCIATION OF HOUSING & REDEVELOPMENT OFFICIALS

6

6



# David S. Gates

Executive Director



© 2020 NATIONAL ASSOCIATION OF HOUSING & REDEVELOPMENT OFFICIALS

7

7



# Ivory Mathews

Interim Executive Director



© 2020 NATIONAL ASSOCIATION OF HOUSING & REDEVELOPMENT OFFICIALS

8

8



# COVID-19

## ReOpening to Full Capacity Plan



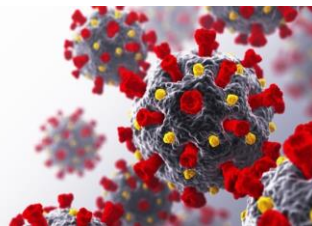
**ReOpen:** A Forum for and With Executive Leaders in the Housing Industry

**Presented by: Ivory N. Mathews, Interim Executive Director**

# COVID-19

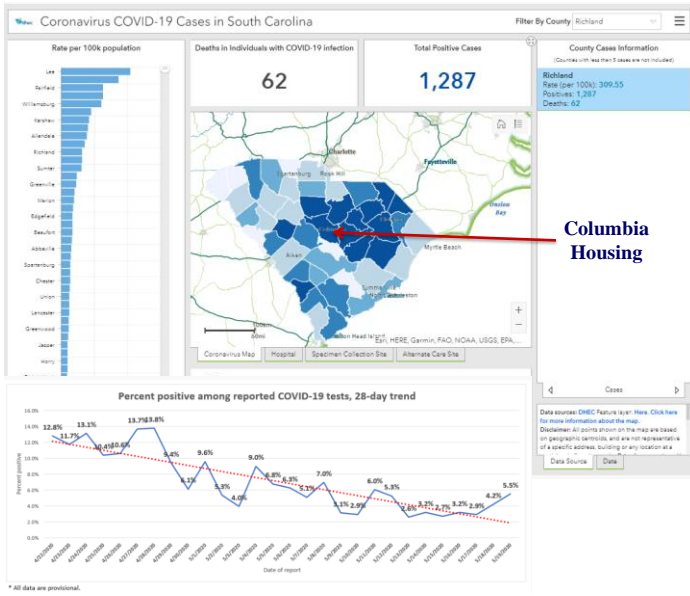
## ReOpening to Full Capacity Plan

1. **PHASE 1:** 14 Day Downward Trajectory
2. **PHASE 2:** 3<sup>rd</sup> Week of Downward Trajectory
3. **PHASE 3:** 5<sup>th</sup> Week of Downward Trajectory





**COVID-19 | Reopening to Full Capacity Plan**



- SC State of Emergency until May 28, 2020
- SC is partially open for Business
- SCHDEC testing increased
- COVID-19 positive infections on the rise
- Richland County highest # of COVID-19 infections in SC
- 80% of CH families live in the COVID-19 hot spots
- 6,400 Units (4,000 HCV + 1,600 PH + 800 other)
- 0 staff and residents confirmed positive
- CH closed since March 30, 2020
- Providing FREE COVID-19 Testing (residents and staff)

**Columbia Housing**



**PHASED RE-OPENING**



**CRITERIA BEFORE PROCEEDING TO PHASED RE-OPENING TO THE PUBLIC**

**PHASE 1 | After 14 Days of Downward Trajectory**

SYMPTOMS & CASES	STAFF	RESIDENTS   PARTICIPANTS	VISITORS
<p><b>SYMPTOMS</b></p> <ul style="list-style-type: none"> <li><input type="checkbox"/> Downward trajectory of COVID-like symptomatic cases reported within a 14-day period</li> </ul> <p><b>CASES</b></p> <ul style="list-style-type: none"> <li><input type="checkbox"/> Downward trajectory of documented cases within a 14-day period</li> </ul> <p><b>OR</b></p> <ul style="list-style-type: none"> <li><input type="checkbox"/> Downward trajectory of positive tests as a percent of total tests within a 14-day period (flat or increasing volume of tests)</li> </ul>	<ul style="list-style-type: none"> <li><input type="checkbox"/> <b>SOCIAL DISTANCING</b> <ul style="list-style-type: none"> <li>▪ Work stations - 6 ft away</li> <li>▪ Place Markers - Signifying 6 ft. away</li> <li>▪ Restrictions on gathering sizes</li> </ul> </li> <li><input type="checkbox"/> <b>PROTECTIVE EQUIPMENT</b> <ul style="list-style-type: none"> <li>▪ Mandatory use of face coverings (supplied by agency)</li> </ul> </li> <li><input type="checkbox"/> <b>TEMPERATURE CHECKS</b> <ul style="list-style-type: none"> <li>▪ Mandatory upon entry</li> </ul> </li> <li><input type="checkbox"/> <b>SANITATION</b> <ul style="list-style-type: none"> <li>▪ Frequently disinfect common areas, high-traffic areas and frequently used surfaces (key boards / phones).</li> <li>▪ Touchless Hand Sanitizer Stations</li> </ul> </li> <li><input type="checkbox"/> <b>WORKFORCE</b> <ul style="list-style-type: none"> <li>▪ Provide training on hygiene protocols</li> <li>▪ Telework</li> <li>▪ Return to Work in Phases (30%)</li> </ul> </li> </ul>	<ul style="list-style-type: none"> <li><input type="checkbox"/> Emergency Work Orders</li> <li><input type="checkbox"/> Emergency Inspections</li> <li><input type="checkbox"/> Rent Payments On-line or by mail</li> <li><input type="checkbox"/> Wellness Screening Tool for entry into residence</li> <li><input type="checkbox"/> <b>PROTECTIVE EQUIPMENT</b> <ul style="list-style-type: none"> <li>▪ Mandatory use of face coverings (supplied by agency)</li> </ul> </li> <li><input type="checkbox"/> Community rooms closed for use</li> </ul>	<ul style="list-style-type: none"> <li><input type="checkbox"/> <b>NO VISITORS</b></li> </ul>



**PHASE 2 |** **3<sup>rd</sup> Week of Downward Trajectory**

**PHASED RE-OPENING**



**PHASED RE-OPENING TO THE PUBLIC**

SYMPTOMS & CASES	STAFF	RESIDENTS   PARTICIPANTS	VISITORS
<p><b>SYMPTOMS</b></p> <ul style="list-style-type: none"> <li><input type="checkbox"/> No Evidence of a Rebound</li> </ul> <p><b>CASES</b></p> <ul style="list-style-type: none"> <li><input type="checkbox"/> No Evidence of a Rebound</li> </ul>	<ul style="list-style-type: none"> <li><input type="checkbox"/> <b>SOCIAL DISTANCING</b> <ul style="list-style-type: none"> <li>▪ Work stations - 6 ft away</li> <li>▪ Place Markers - Signifying 6 ft. away</li> <li>▪ Restrictions on gathering sizes</li> </ul> </li> <li><input type="checkbox"/> <b>PROTECTIVE EQUIPMENT</b> <ul style="list-style-type: none"> <li>▪ Mandatory use of face coverings</li> </ul> </li> <li><input type="checkbox"/> <b>TEMPERATURE CHECKS</b> <ul style="list-style-type: none"> <li>▪ Mandatory upon entry</li> </ul> </li> <li><input type="checkbox"/> <b>SANITATION</b> <ul style="list-style-type: none"> <li>▪ Frequently disinfect common areas, high-traffic areas and frequently used surfaces (key boards / phones).</li> <li>▪ Touchless Hand Sanitizer Stations</li> </ul> </li> <li><input type="checkbox"/> <b>WORKFORCE</b> <ul style="list-style-type: none"> <li>▪ Telework</li> <li>▪ Return to Work in Phases (60%)</li> <li>▪ Special Accommodations for Employees who are members of a vulnerable population</li> </ul> </li> </ul>	<ul style="list-style-type: none"> <li><input type="checkbox"/> Emergency Work Orders</li> <li><input type="checkbox"/> Emergency Inspections</li> <li><input type="checkbox"/> Rent Payments On-line or by mail</li> <li><input type="checkbox"/> Wellness Screening Tool for entry into residence</li> <li><input type="checkbox"/> <b>PROTECTIVE EQUIPMENT</b> <ul style="list-style-type: none"> <li>▪ Mandatory use of face coverings (<i>supplied by agency</i>)</li> </ul> </li> <li><input type="checkbox"/> Community Rooms open with mandatory social distancing and PPE requirements</li> </ul>	<ul style="list-style-type: none"> <li><input type="checkbox"/> <b>VISITORS BY APPOINTMENT ONLY</b></li> <li><input type="checkbox"/> <b>SOCIAL DISTANCING</b> <ul style="list-style-type: none"> <li>▪ Lobby seating - 6 ft away</li> <li>▪ Place Markers - Signifying 6 ft. away</li> <li>▪ Create physical barriers between people</li> <li>▪ Restrictions on number of visitors at any one given time</li> </ul> </li> <li><input type="checkbox"/> <b>PROTECTIVE EQUIPMENT</b> <ul style="list-style-type: none"> <li>▪ Mandatory use of face coverings</li> <li>▪ Will provide a disposable face covering if visitor does not have one</li> </ul> </li> <li><input type="checkbox"/> <b>TEMPERATURE CHECKS</b> <ul style="list-style-type: none"> <li>▪ Mandatory upon entry</li> </ul> </li> <li><input type="checkbox"/> <b>SANITATION</b> <ul style="list-style-type: none"> <li>▪ Touchless Hand Sanitizer Stations in lobby areas</li> </ul> </li> </ul>

13

13



**PHASE 3 |** **5<sup>th</sup> Week of Downward Trajectory**

**PHASED RE-OPENING**



**PHASED RE-OPENING TO THE PUBLIC**

SYMPTOMS & CASES	STAFF	RESIDENTS   PARTICIPANTS	VISITORS
<p><b>SYMPTOMS</b></p> <ul style="list-style-type: none"> <li><input type="checkbox"/> No Evidence of a Rebound</li> </ul> <p><b>CASES</b></p> <ul style="list-style-type: none"> <li><input type="checkbox"/> No Evidence of a Rebound</li> </ul>	<ul style="list-style-type: none"> <li><input type="checkbox"/> <b>SOCIAL DISTANCING</b> <ul style="list-style-type: none"> <li>▪ Work stations - 6 ft away</li> <li>▪ Place Markers - Signifying 6 ft. away</li> <li>▪ Restrictions on gathering sizes</li> </ul> </li> <li><input type="checkbox"/> <b>PROTECTIVE EQUIPMENT</b> <ul style="list-style-type: none"> <li>▪ Voluntary use of face coverings</li> </ul> </li> <li><input type="checkbox"/> <b>SANITATION</b> <ul style="list-style-type: none"> <li>▪ Frequently disinfect common areas, high-traffic areas and frequently used surfaces (key boards / phones).</li> <li>▪ Touchless Hand Sanitizer Stations</li> </ul> </li> <li><input type="checkbox"/> <b>WORKFORCE</b> <ul style="list-style-type: none"> <li>▪ Special Accommodations for Employees who are members of a vulnerable population</li> <li>▪ Resume Unrestricted staffing of worksites</li> </ul> </li> </ul>	<ul style="list-style-type: none"> <li><input type="checkbox"/> Wellness screening tool for entry into occupied units</li> <li><input type="checkbox"/> Community Rooms open with voluntary social distancing and PPE requirements</li> </ul>	<ul style="list-style-type: none"> <li><input type="checkbox"/> <b>VISITORS</b> <ul style="list-style-type: none"> <li>▪ Limitation of visitors in lobby per site</li> </ul> </li> <li><input type="checkbox"/> <b>SOCIAL DISTANCING</b> <ul style="list-style-type: none"> <li>▪ Lobby seating - 6 ft away</li> </ul> </li> <li><input type="checkbox"/> <b>SANITATION</b> <ul style="list-style-type: none"> <li>▪ Touchless Hand sanitizer stations in lobby areas</li> </ul> </li> </ul>

14

14



# Ivory Mathews

Interim Executive Director



© 2020 NATIONAL ASSOCIATION OF HOUSING & REDEVELOPMENT OFFICIALS

15

15



## DISCUSSION WITH SUNNY, MARSHA, DAVID, & IVORY

16



## COVID-19 RESOURCES



[www.nahro.org/coronavirus](http://www.nahro.org/coronavirus)

[www.nahroblog.org](http://www.nahroblog.org)

© 2020 NATIONAL ASSOCIATION OF HOUSING & REDEVELOPMENT OFFICIALS

17

17

All rights reserved. No part of this publication may be reproduced, stored in a retrieval system or transmitted in any form, electronic, mechanical, photographic, recorded or otherwise, without prior written permission of the National Association Of Housing And Redevelopment Officials.

National Association of Housing & Redevelopment Officials  
630 I Street NW Washington DC 20001

© 2020

© 2020 NATIONAL ASSOCIATION OF HOUSING & REDEVELOPMENT OFFICIALS

18

18